



MOONWALLSTICKERS

ART.DECOR.DESIGN

Thank you for your purchase.

For best results, please review the following instructions:

INSTALLING & TOOLS

Unroll all panels and lay them flat on the floor. You may notice creases and/or bubbles as you unroll the panels. Don't worry, this is normal. The creases will disappear once you remove the backing and apply the mural to the wall. The panels should be hung edge to edge. Before hanging, please make sure that all panels are included and none are damaged or defective. During the manufacturing process of your wall mural, we have added a bleed of 50 mm to your sizes to accommodate any imperfect angled walls.

All you need to install the wallpaper is : SPIRIT LEVEL, PENCIL, KNIFE , TRIM GUIDE, RULER, SMOOTHER.

SURFACE PREPARATION

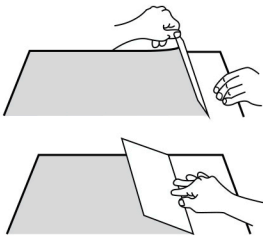
The self-adhesive wallpaper comes ready for immediate application. It can be hung on any smooth, dry and dust-free surfaces. Preparation of the surface is essential for hanging the self-adhesive wallpaper in a quality manner. Before hanging the wallpaper, smooth possible roughness with a sandpaper and then remove dirt and dust from the wall. If dirt and dust enter the pasted side, the self-adhesive wallpaper ceases to paste correctly. The self-adhesive wallpaper IS NOT designed for fresh-painted, wet and latex surfaces. Recently painted walls shall dry for at least three weeks. Do not hang the wallpaper on damp or cold surfaces or close to heat sources such as panel heaters, central heating, fire and cooking stoves.

Plaster, chalk or lime-painted surfaces should be smoothed with a primer and bonding primer before the wallpaper is started to be hung.

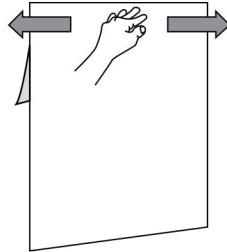
TEMPERATURE RECOMMENDED FOR HANGING

Optimum temperature for hanging is within the range from 15 to 28°C. Heat increases the adhesion of the paste. Minimum temperature for hanging is 5°C. At freezing point, the paste does not interact with the surface. Maximum temperature is 35°; at a higher temperature, the wallpaper foil starts to extend or deform.

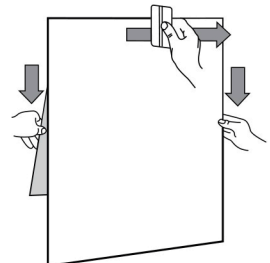
HOW TO INSTALL THE SELF-ADHESIVE WALLPAPER



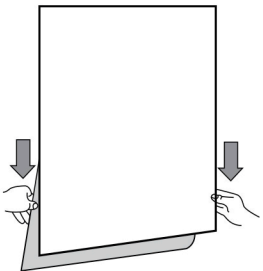
Apply the mural from left to right. Take the first panel, peel back the backing sheet approximately 20 cm and sharply crease the liner. DON'T peel all the backing off.



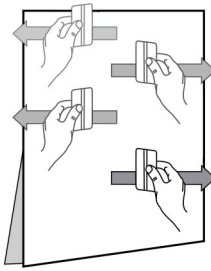
Position your first panel on the wall. Make sure your first drop is in a perfectly vertical position. Align the panel on the wall and use finger pressure to tack it in place.



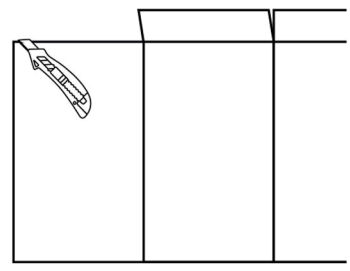
Take the squeegee supplied and squeegee from the centre outward and left to right. Use gentle strokes and even pressure.



Reach underneath the panel and gradually pull another piece of the backing paper away. Use the same method to apply, until you reach the bottom of the panel.



Repeat with the remaining panels. Remember the panels are applied edge to edge. To re-apply any part, simply peel away from the wall and re-apply. Avoid stretching and pulling.



Once all the panels have been hung, trim off any excess paper using a trim guide and a sharp knife.

If you require any help or advice when applying your wallpaper please don't hesitate to contact us on support@moonwallstickers.com or watch our instructional videos online at www.moonwallstickers.com